



GMT MONTHLY MEMBERSHIP PROGRESS REPORT

Results as of: 3/31/2026

Multiple District 6

LOCATION: COLORADO

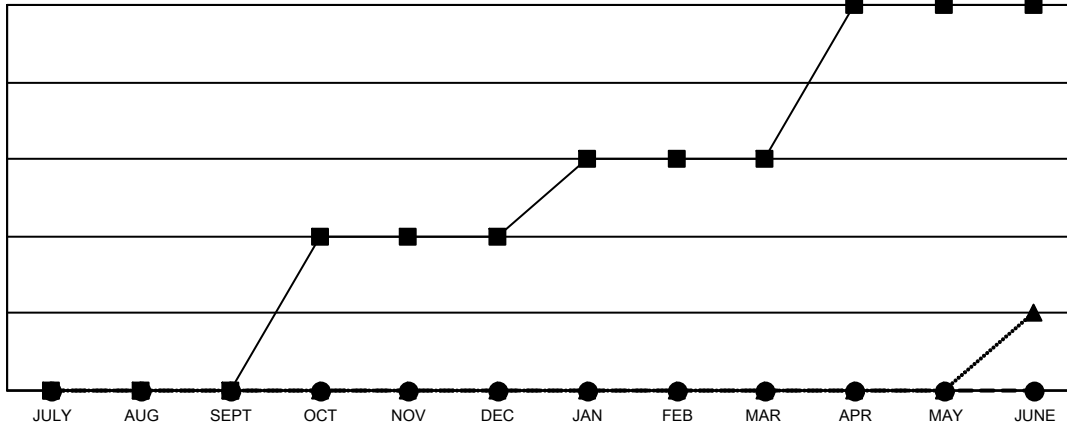
GMT: OPEN

GMT CA 1

Clubs			
RESULTS FOR 2025-2026			
QUARTER	NEW CLUB GOAL	NEW CLUBS	DROPPED CLUBS
JULY/AUG/SEPT	0	0	0
OCT/NOV/DEC	2	0	1
JAN/FEB/MAR	1	0	0
APR/MAY/JUNE	2	0	0

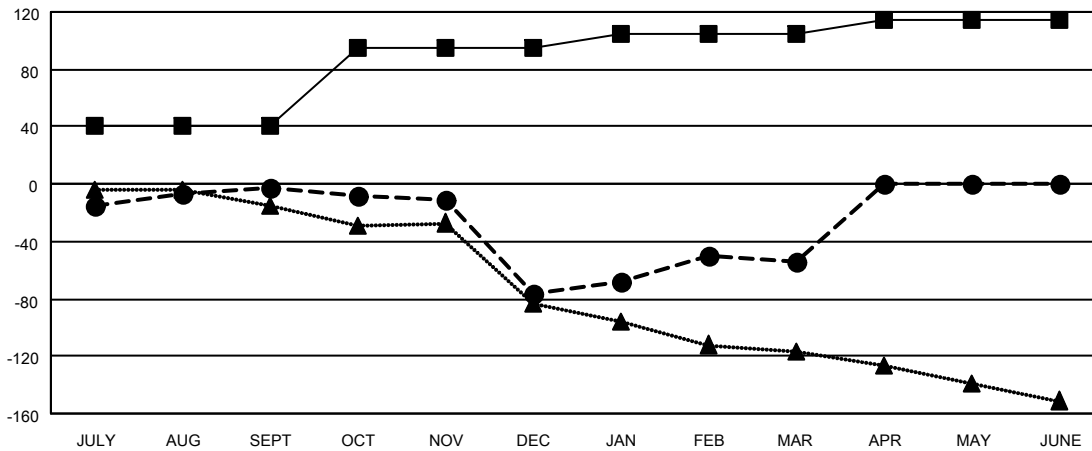
Members			
RESULTS FOR 2025-2026			
QUARTER	MEMBER GROWTH NET GOAL	MEMBER GROWTH ACTUAL	DROPPED MEMBERS ACTUAL (including transfers)
JULY/AUG/SEPT	40	74	61
OCT/NOV/DEC	55	51	118
JAN/FEB/MAR	10	88	53
APR/MAY/JUNE	10	0	0

GOALS AND ACTUAL NEW CLUBS CUMULATIVE



- - CURRENT YEAR GOALS FOR NEW CLUBS
- - CURRENT YEAR ACTUAL NEW CLUBS
- ▲ - LAST YEAR ACTUAL NEW CLUBS

GOALS AND ACTUAL MEMBERS CUMULATIVE



- - MEMBER GROWTH NET GOAL
- - MEMBER GROWTH ACTUAL
- ▲ - LAST YEAR MEMBERSHIP ACTUAL

DROPPED CLUBS: 1	55 CLUBS OF 105 ADDED 1 OR MORE NEW MEMBERS	GENDER DISTRIBUTION
		MALE 1,367 (58.27%)
		FEMALE 979 (41.73%)
DROPPED MEMBERS	CLICK HERE FOR CUMULATIVE MEMBERSHIP DATA	TOTAL FAMILY UNIT MEMBERS 532
DECEASED 21		FAMILY MEMBERS PAYING HALF DUES 282
CLUB CANCELLED 5		
OTHER 205		
TOTAL 231		